

Intake

What You Need To Know

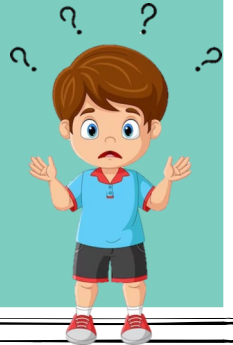
Things To Expect During this Process...

- 1) Intakes are first come first serve.
- 2) There are 2 parts to the Intake Process;
 - Enrollment (Part 1)
 - Intake (Part 2)
- 3) Completing this process could take from 2 to 2.5 hours.
- 4) During Enrollment, Please bring ID, SS Card, & Insurance Card (if available).
- 5) In Enrollment you will be asked about Demographical information, & financial information and complete consents & any needed Releases of Information.
- 6) During Intake Process, you will be asked several questions, some being;
 - The reason for you presenting today,
 - Personal & family history, suicidal/homicidal history (if any),
 - Services you wish to receive at our agency,
 - Goals you have, and how we can help you achieve them.
- 7) Once Intake is completed, you will be referred to an appropriate level of care that will help you to address the goals that you shared with staff to assist with resolving the problem that you presented with to receive services.



Things Not To Expect During this Process...

1. A quick in-and-out process
2. Seeing a Physician or nurse for medication on same day as intake
3. Housing
4. Financial Assistance



What you should have when you are finished with intake...

- 1) Understanding which services you are being referred to
- 2) Copy of CSBMG Handbook
- 3) Copy of Crisis & Safety Plan
- 4) Appointment for Therapy (if applicable)
- 5) Appointment for Labs
- 6) Appointment for Physician and Nurse

